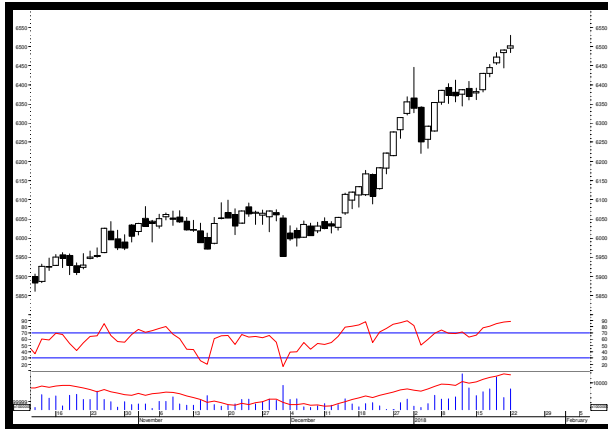


MARKET VIEW

COMPOSITE



Sumber: MetaStock

IHSG berhasil menguat kembali di awal pekan perdagangan kemarin sebesar 0.15% atau 9.83 poin di level 6,500.53. Namun minat jual asing tercatat kembali mewarnai pergerakan IHSG di perdagangan kemarin sebesar Rp.288.65 miliar. Dan dari sekitar 503 saham yang kemarin aktif di perdagangan sekitar 208 saham menguat, 159 saham terkoreksi, dan 136 saham tidak mengalami perubahan. Dan secara keseluruhan pergerakan IHSG di perdagangan hari ini diperkirakan masih akan berfluktuatif dikisaran:

Support : 6,474.69
Resistance : 6,534.39

Close	Point	%Change	52 Weeks Return	Market Caps
6,500.53	9.63	0.15%	22.82%	7,234.94
Active Stock			Trading Volume	Trading Value
Up	Down	Unchange	10.79	9.37
208	159	136		

Sumber: IQPlus

STOCKS ANALYSIS

AKR CORPORINDO (AKRA)



Sumber: MetaStock

Rekomendasi: Trading Buy

Resistance	2	:	6475
	1	:	6350
Support	1	:	6200
	2	:	6150

Trading range sementara masih dikisaran level 6050 – 6450. Target sementara dikisaran level 6700 – 7100 bila harga berhasil menguat dan bertahan di atas level 6450.

SURYA SEMESTA INTERNUSA (SSIA)



Sumber: MetaStock

Rekomendasi: Trading Buy

Resistance	2	:	555
	1	:	540
Support	1	:	498
	2	:	494

Target di level 535 telah tercapai di perdagangan kemarin. Target selanjutnya dikisaran level 555 selama harga masih dapat bertahan di atas level 520.

BUMI SERPONG DAMAI (BSDE)



Sumber: MetaStock

Rekomendasi: Trading Sell

Resistance	2	:	1725
	1	:	1695
Support	1	:	1665
	2	:	1655

Trading range saat ini masih dikisaran level 1660 – 1725. Target koreksi sementara dikisaran level 1620 bila harga bertahan di bawah level 1660.

TELEKOMUNIKASI INDONESIA (TLKM)



Sumber: MetaStock

Rekomendasi: Trading Sell

Resistance	2	:	4190
	1	:	4160
Support	1	:	4120
	2	:	4100

Trading range sementara dikisaran level 4120 – 4280. Waspada bila harga melemah dan bertahan di bawah level 4120 karena membuka peluang untuk menguji level 4060 – 3970 sebagai target koreksi sementara.

LOGINDO SAMUDRA MAKMUR (LEAD)



Sumber: MetaStock

Rekomendasi: Sell on Strength

Resistance	2	:	116
	1	:	110
Support	1	:	91
	2	:	87

Target di level 97 dan 105 telah tercapai di perdagangan kemarin dan harga mulai memasuki area jenuh beli (*overbought*) sehingga berpotensi membentuk konsolidasi. Target selanjutnya dikisaran level 118.

BHAKTI INVESTAMA (BHIT)



Sumber: MetaStock

Rekomendasi: Trading Buy

Resistance	2	:	105
	1	:	104
Support	1	:	100
	2	:	99

Trading range sementara dikisaran level 94 – 105. Target sementara dikisaran level 109 – 115 bila harga berhasil menguat dan bertahan di atas level 105.

BANK RAKYAT INDONESIA (BBRI)



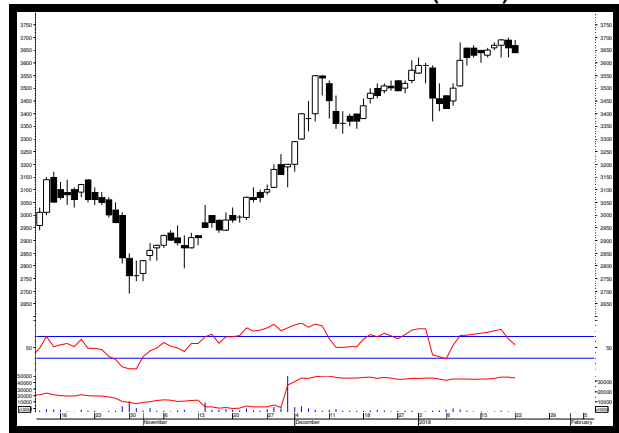
Sumber: MetaStock

Rekomendasi: Trading Buy

Resistance	2	:	3720
	1	:	3670
Support	1	:	3610
	2	:	3580

Target sementara dikisaran level 3710 – 3820 selama harga masih dapat bertahan di atas level 3820.

BANK TABUNGAN NEGARA (BBTN)



Sumber: MetaStock

Rekomendasi: Trading Buy

Resistance	2	:	
	1	:	
Support	1	:	
	2	:	

Saat ini harga masih berada di area jenuh beli (*overbought*) dan target di level 3700 telah tercapai di perdagangan kemarin. Namun selama harga masih dapat bertahan di atas level 3590 masih berpeluang untuk menguji target selanjutnya di level 3850.

LQ45 TRADING GUIDE

Ticker	Closing	Support	Pivot	Resistance	Trend		Daily Beta	Daily Volatility	
					Daily	Weekly		Last	Average
AGRICULTURE									
Plantation & Others									
AALI	12,975	12,975	13,033	13,150	Bearish	Bearish	0.94	1.35%	2.75%
LSIP	1,350	1,340	1,353	1,370	Bearish	Bearish	0.88	2.24%	3.20%
SSMS	1,400	1,400	1,415	1,445	Bearish	Bearish	0.68	3.21%	2.91%
MINING									
Coal, Oil & Gas, Metal & Other Resources									
ADRO	2,180	2,160	2,190	2,230	Bullish	Bearish	1.32	3.24%	3.94%
BUMI	288	286	289	294	Bullish	Bullish	0.78	2.80%	4.90%
PTBA	3,120	3,040	3,110	3,170	Bullish	Bullish	1.09	4.28%	3.73%
ANTM	760	735	753	765	Bullish	Bullish	0.95	4.08%	3.76%
INCO	3,380	3,330	3,377	3,420	Bullish	Bullish	1.27	2.70%	4.09%
BASIC INDUSTRY									
Cement & Others									
INTP	22,575	22,575	22,717	23,000	Bearish	Bullish	1.35	1.88%	2.82%
SMGR	10,950	10,800	10,975	11,175	Bearish	Bullish	1.27	3.47%	2.69%
BRPT	2,190	2,170	2,193	2,220	Bearish	Bearish	0.71	2.30%	4.44%
MISC.INDUSTRY									
Otomotif & Manufacturing of Garments									
ASII	8,350	8,250	8,317	8,350	Bullish	Bullish	1.35	1.21%	2.51%
SRIL	374	372	375	378	Bearish	Bullish	1.04	1.61%	4.81%
CONSUMER GOODS									
Foods, Cigarette, Pharmacy & Others									
ICBP	8700	8575	8725	8900	Bearish	Bearish	0.98	3.79%	2.48%
INDF	7,925	7,850	7,900	7,925	Bearish	Bullish	1.30	0.96%	2.51%
UNVR	54,450	54,300	54,583	55,000	Bullish	Bullish	1.06	1.29%	2.00%
HMSP	5,100	4,920	5,040	5,100	Bullish	Bullish	0.89	3.66%	2.34%
GGRM	84,025	82,575	83,542	84,025	Bullish	Bullish	1.16	1.76%	2.60%
KLBF	1,705	1,690	1,712	1,740	Bearish	Bearish	1.15	2.96%	2.53%
PROPERTY & CONSTRUCTIONS									
BSDE	1,690	1,680	1,698	1,725	Bearish	Bearish	1.42	2.68%	2.88%
LPKR	510	510	517	530	Bullish	Bullish	0.95	3.92%	3.40%
PPRO	199	199	201	204	Bearish	Bullish	1.08	2.51%	4.38%
PWON	700	690	698	705	Bullish	Bullish	1.38	2.17%	3.55%
SMRA	1,025	1,005	1,022	1,035	Bearish	Bullish	1.48	2.99%	3.59%
ADHI	2,150	2,130	2,153	2,180	Bearish	Bullish	1.18	2.35%	3.27%
PTPP	2,960	2,950	2,990	3,060	Bearish	Bearish	1.01	3.73%	2.86%
WIKA	1,970	1,955	1,978	2,010	Bearish	Bullish	1.15	2.81%	2.97%
WSKT	2,630	2,610	2,637	2,670	Bearish	Bullish	1.00	2.30%	2.84%
INFRASTRUCTURE									
Energy, Telecommunication, Transportation & Highway, Non Building Construction									
PGAS	2,350	2,150	2,290	2,370	Bullish	Bullish	1.26	10.23%	3.36%
JSMR	6,200	6,125	6,208	6,300	Bearish	Bearish	1.11	2.86%	2.53%
EXCL	3,150	3,100	3,153	3,210	Bearish	Bearish	1.11	3.55%	3.79%
TLKM	4,160	4,120	4,157	4,190	Bearish	Bearish	1.05	1.70%	1.99%
FINANCE									
Bank & Other Financing									
BBCA	22,450	22,400	22,500	22,650	Bullish	Bullish	1.00	1.12%	1.81%
BBNI	9,425	9,300	9,425	9,550	Bearish	Bearish	1.26	2.69%	2.51%
BBRI	3,620	3,580	3,610	3,630	Bearish	Bullish	1.37	1.40%	2.20%
BBTN	3,660	3,620	3,660	3,700	Bearish	Bullish	1.03	2.21%	2.86%
BJBR	2,320	2,290	2,320	2,350	Bullish	Bullish	1.06	2.62%	4.06%
BMRI	8,075	8,050	8,100	8,175	Bearish	Bearish	1.31	1.55%	2.24%
TRADE & SERVICE									
Investment Company & Wholesale									
AKRA	6,300	6,275	6,317	6,375	Bearish	Bearish	0.80	1.59%	3.06%
UNTR	37,400	36,725	37,242	37,600	Bearish	Bearish	1.29	2.38%	3.20%
LPPF	11,000	10,600	10,867	11,000	Bullish	Bullish	1.24	3.77%	3.40%
BMTR	650	650	657	670	Bearish	Bearish	1.09	3.08%	4.32%
MNCN	1,460	1,445	1,463	1,485	Bearish	Bullish	1.34	2.77%	3.86%
SCMA	2,520	2,470	2,507	2,530	Bearish	Bullish	1.23	2.43%	3.52%
MYRX	111	111	112	115	Bearish	Bullish	0.72	3.60%	3.35%

Sumber: Lautandhana Secuirindo

Note:

1. Bila harga OPEN pada perdagangan hari ini lebih besar (kecil) daripada nilai PIVOT, maka terdapat kemungkinan saham tersebut akan berpotensi menguat (melemah) pada perdagangan hari ini.
2. Beta diatas 1 ($b > 1$) mengindikasikan adanya kemungkinan saham tersebut bergerak melebihi pergerakan pasar.
(jika kondisi pasar (IHSG) dalam keadaan *bullish* (*bearish*) maka saham tersebut kemungkinan akan naik (turun) melebihi kenaikan (penurunan) pasar)
3. Bila trend daily dan weekly menunjukkan bullish (bearish), maka besar kemungkinan saham tersebut akan menguat (melemah)
4. *Daily Volatility* merupakan historis dari keuntungan maksimum maupun kerugian maksimum yang dapat diterima investor dalam 1 hari perdagangan.
(**Last**: historis volatilitas pada perdagangan kemarin, **Average**: rata-rata volatilitas per hari selama 1 tahun perdagangan)



Wisma Keia 15th floor
Jl. Jendral Sudirman Kav. 3
Jakarta 10220
T +62 21 5785 1818
F +62 21 5785 1637

EQUITY DIVISION

Jakarta Branch Pluit

Kawasan CBD Pluit Blok A No.20
Jl. Pluit Selatan Raya No.1
Jakarta Utara 14440
T +6221 6667 5345
F +6221 6667 5234

Kelapa Gading

Sentra Bisnis Artha Gading
Jl. Boulevard Artha Gading Blok A6B Kav.7
Kelapa Gading Barat
Jakarta Utara 14240
T +6221 4585 6402
F +6221 4587 3961

Puri

Rukan Grand Taman Aries Niaga Blok G1 No.11
Jl. Taman Aries Kembangan
Jakarta Barat 11620
T +6221 2931 9515
F +6221 2931 9516

Others Branch Bandung

Komplek Paskal Hypersquare
Blok C No. 15, Kebon Jeruk
Bandung 40181
T +6222 8606 1027
F +6222 8606 0684

Medan

Jl. Cut Mutia No.15B
Medan 20152
T +6261 451 8855
F +6261 455 1833

Surabaya Branch

Ruko Permata Bintoro
Jl. Ketampon Kav.1-2
Surabaya
T +6231 562 2555
F +6231 567 1398

DISCLAIMER

This report has been prepared by PT. Lotus Andalan Sekuritas on behalf of itself and its affiliated companies and is provided for information purposes only. Under no circumstances is it to be used or considered as an offer to sell, or a solicitation of any offer to buy. This report has been produced independently and the forecasts, opinions and expectations contained herein are entirely those of PT. Lotus Andalan Sekuritas.

While all reasonable care has been taken to ensure that information contained herein is not untrue or misleading at the time of publication, PT. Lotus Andalan Sekuritas makes no representation as to its accuracy or completeness and it should not be relied upon as such. This report is provided solely for the information of clients of PT. Lotus Andalan Sekuritas who are expected to make their own investment decisions without reliance on this report. Neither PT. Lotus Andalan Sekuritas nor any officer or employee of PT. Lotus Andalan Sekuritas accept any liability whatsoever for any direct or consequential loss arising from any use of this report or its contents. PT. Lotus Andalan Sekuritas and/or person connected with it may have acted upon or used the information herein contained, or the research or analysis on which it is based, before publication.